

X-HEAD MODEL XR

ULTRA QUICK TOOL / HEAD CHANGING SYSTEM

HEAD / TOOL SWAP FROM **1 TO 4 MINUTES**

DRASTIC REDUCTION OF PRODUCTION DOWN TIME

DRASTIC REDUCTION OF SCRAP

The X-HEAD Model R is engineered with an Ultra Quick Head changeover system that dramatically enhances operational efficiency. It allows for cross-head or tool changes in as little as 1 minute and up to a maximum of 4 minutes which is a vast improvement compared to the standard 45 minute changeover time used in the 80/100 models.

Key Benefits:

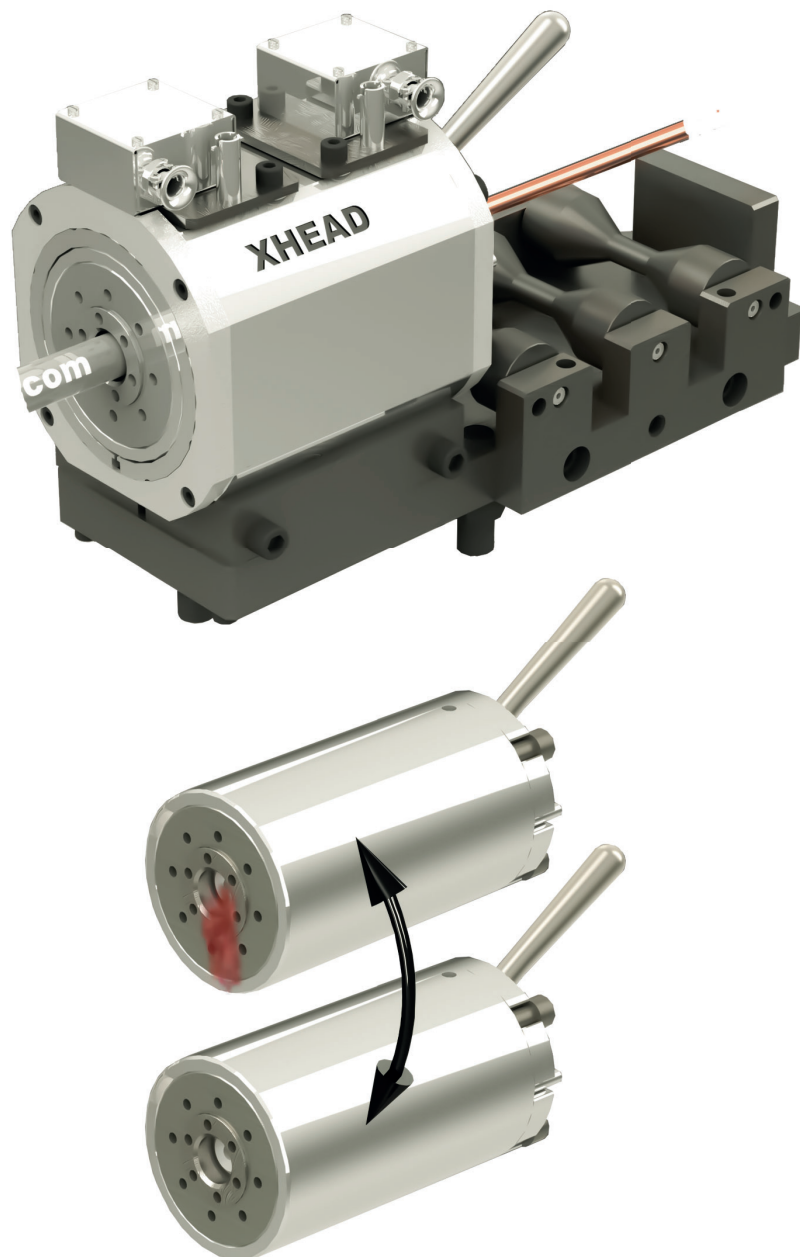
Reduced Downtime:

The system minimizes production stoppages by slashing changeover times, meaning production isn't held up for lengthy cleaning or setup processes.

Off-line Operations:

Critical tasks such as cleaning, tooling assembly, and heating to production set temperature are all performed offline during extrusion production. This ensures that the main production line remains continuously operational without delays.

In summary, the X-HEAD Model R's design significantly cuts down on production downtime, making it a highly efficient solution for operations where minimizing interruptions is crucial.



Crosshead model XR

Specification	XR1
Minimum core Ø	0.1 mm
Maximum core Ø	4 mm
Minimum die Ø	0.2 mm
Maximum insulation Ø	6 mm
Maximum tube die Ø	8 mm
Maximum pressure	500 bar
Layer types	1.0 single layer 1.1 single layer + skin or stripe 1.2 single layer + skin + stripe or single layer + 2 different stripes 2.0 double layer 2.1 double layer + skin or stripe 2.2 double layer + skin + stripe or double layer + 2 different stripe
Application	
Materials	PE (LD, MD, HD), PP, XLPE, TPE, PA, PBT, PC, PVC, EPDM, HFFR, Foamed PE/PP
Special characteristics	
Centering types	fixed, micro centring
Heating zones	2/3
Entry ports	
Options	
Extruder connections	connection flanges for any type of extruder
By-pass	manual, hydraulic
Distributors	design for special polymers
Distributors	Maintenance handling system for easy cleaning
Ultra Glide	Special surface treatment to reduce friction
Accessories	vacuum adaptator, service tool box
Head support	head stand, head trolley

Crosshead model XR

Specification	XR2
Minimum core Ø	1.0 mm
Maximum core Ø	16 mm
Minimum die Ø	1.0 mm
Maximum insulation Ø	20 mm
Maximum tube die Ø	20 mm
Maximum pressure	500 bar

Layer types	1.0 single layer 1.1 single layer + skin or stripe 1.2 single layer + skin + stripe or single layer + 2 different stripes 2.0 double layer 2.1 double layer + skin or stripe 2.2 double layer + skin + stripe or double layer + 2 different stripe
-------------	---

Application	
Materials	PE (LD, MD, HD), PP, XLPE, TPE, PA, PBT, PC, PVC, EPDM, HFFR, Foamed PE/PP

Special characteristics	
Centering types	fixed, micro centring, manual
Heating zones	2/3

Options	
Extruder connections	connection flanges for any type of extruder
By-pass	manual, hydraulic
Distributors	design for special polymers
Distributors	Maintenance handling system for easy cleaning
Ultra Glide	Special surface treatment to reduce friction
Accessories	vacuum adaptator, service tool box
Head support	head stand, head trolley

Crosshead model XR

Specification	XR3
Minimum core Ø	3.0 mm
Maximum core Ø	25 mm
Minimum die Ø	3.0 mm
Maximum insulation Ø	35 mm
Maximum tube die Ø	35 mm
Maximum pressure	500 bar

Layer types	1.0 single layer 1.1 single layer + skin or stripe 1.2 single layer + skin + stripe or single layer + 2 different stripes 2.0 double layer 2.1 double layer + skin or stripe 2.2 double layer + skin + stripe or double layer + 2 different stripe
-------------	---

Application	
Materials	PE (LD, MD, HD), PP, XLPE, TPE, PA, PBT, PC, PVC, EPDM, HFFR, Foamed PE/PP

Special characteristics	
Centering types	fixed, manual
Heating zones	2/3

Options	
Extruder connections	connection flanges for any type of extruder
By-pass	manual, hydraulic
Distributors	design for special polymers
Distributors	Maintenance handling system for easy cleaning
Ultra Glide	Special surface treatment to reduce friction
Accessories	vacuum adaptator, service tool box
Head support	head stand, head trolley

Crosshead model XR

Specification	XR4
Minimum core Ø	5.0 mm
Maximum core Ø	35 mm
Minimum die Ø	5.0 mm
Maximum insulation Ø	45 mm
Maximum tube die Ø	45 mm
Maximum pressure	500 bar

Layer types	1.0 single layer 1.1 single layer + skin or stripe 1.2 single layer + skin + stripe or single layer + 2 different stripes 2.0 double layer 2.1 double layer + skin or stripe 2.2 double layer + skin + stripe or double layer + 2 different stripe
-------------	---

Application	
Materials	PE (LD, MD, HD), PP, XLPE, TPE, PA, PBT, PC, PVC, EPDM, HFFR, Foamed PE/PP

Special characteristics	
Centering types	fixed, manual
Heating zones	2/3

Options	
Extruder connections	connection flanges for any type of extruder
By-pass	manual, hydraulic
Distributors	design for special polymers
Distributors	Maintenance handling system for easy cleaning
Ultra Glide	Special surface treatment to reduce friction
Accessories	vacuum adaptator, service tool box
Head support	head stand, head trolley

Crosshead model XR

Specification	XR5
Minimum core Ø	10.0 mm
Maximum core Ø	60 mm
Minimum die Ø	10.0 mm
Maximum insulation Ø	70 mm
Maximum tube die Ø	70 mm
Maximum pressure	500 bar
Layer types	1.0 single layer 1.1 single layer + skin or stripe 1.2 single layer + skin + stripe or single layer + 2 different stripes 2.0 double layer 2.1 double layer + skin or stripe 2.2 double layer + skin + stripe or double layer + 2 different stripes
Application	
Materials	PE (LD, MD, HD), PP, XLPE, TPE, PA, PBT, PC, PVC, EPDM, HFFR, Foamed PE/PP
Special characteristics	
Centering types	fixed, manual
Heating zones	2/3
Options	
Extruder connections	connection flanges for any type of extruder
By-pass	manual, hydraulic
Distributors	design for special polymers
Distributors	Maintenance handling system for easy cleaning
Ultra Glide	Special surface treatment to reduce friction
Accessories	vacuum adaptator, service tool box
Head support	head stand, head trolley